

Free entry to the show on the day

At Earls Colne Recreation Club

11 a.m. until late

Saturday 16th August 2025



FOUR COLNES

HORTICULTURAL SOCIETY



Schedule 2025





**Olivers Plants are your
local Plant Specialists.**
Dedicated Grower Retailer

From Houseplants to summer bedding,
from trees to vegetables we have it all.
Our staff at both our Nursery and our Retail Plant
Centre have an expert knowledge of plant care.

We supply both the public and trade customers as the
quality and price of our products are second to none.

Mon - Sat
8.30am -5.00pm
Sun
10.00am-4.00pm
Coggeshall Road,
Earls Colne,
CO6 2JX

A banner featuring the Olivers Plants logo, which is a red oval with the text 'Olivers Plants' in green. Below the logo, the text 'THE PLANT SPECIALISTS' and 'DEDICATED GROWER RETAILER' is displayed. The background of the banner shows green fern leaves.

01787 220281
EARLS COLNE, ESSEX, CO6 2JX

THE PLANT SPECIALISTS
DEDICATED GROWER RETAILER

WWW.OLIVERSPLANTS.CO.UK
EMAIL: INFO@OLIVERSPLANTS.CO.UK

THE FOUR COLNES HORTICULTURAL SOCIETY

Would like to thank the following local businesses and organisations who have provided financial support , sponsorship or services for the 2024 and 2025 shows

(correct at the time of going to press)

Aisha Jackson Designs Colne Skips Earls Colne Library Heritage Estate Agents MBM Landscapes Limited Olivers Plants RSPCA Danaher Three Colnes Parish Magazine Ziel Designs	Black Horse Café E Colnes Refillery Earls Colne Recreation Club Kings Seeds North-East Essex First Aid Percival & Company Stane Street Players Wilkins & Sons
---	--

Advertising signs were provided by

Percival & Company

RAFFLE PRIZES FOR 2025

(correct at the time of going to press):

£100 Cash Prize from Four Colnes Horticultural Society
and generous donations from the following:

ABCO Insurance Authentically You Blackwells Farm Shop Colnes Constitutional Club Colne Valley Wines Drum Inn Earls Colne Recreation Club Fresh and Wild Fish Hidden Dragon Kung Fu & Tai Chi Club Markshall Estate Rainbow Fish Bar Stane Street Players Twisted Blonde	Anglian Flight Centre Bill and Bert's Britten's Bites Colne Valley Golf Club Drapers Hotel East of England Co op Feathers Hairdressers Heritage Estate Agents Jemreflexology Ministry Of Hair and Beauty Sidmar Electrical Tom Littlewood Tennis Lessons 4 U & more to come!
--	---





THE FOUR COLNES HORTICULTURAL SOCIETY

The FCHS has been part of the Colne Valley community since 1880. The Society's Committee meet regularly to organise up and coming events, trips and visiting speakers for the benefit of around 200 FCHS members.

The committee run the annual Four Colnes Show which takes place at The Earls Colne Recreation Club. The Four Colnes Show is a community event that draws people from all the surrounding villages with many stalls, competitions and outdoor events.

The FCHS is run entirely by volunteers and any surplus funds are used to advance the Society's aims and support community projects. FCHS Membership is open to anyone and is currently £5 per year.

Want to find out more? www.fourcolneshorticulturalsociety.com

FUN DOG SHOW

Fun Dog Show £2 to enter. More information from:

www.fourcolneshorticulturalsociety.com

or see us at our stand on the day.

Thanks to our RSPCA Danaher for our Judge and the sponsors,
Heritage Estate Agents

STALLS

To enquire about having a stall at the show please contact Claire Smith at Percival & Company tel. 01787 223879 or email claire@percivalandcompany.co.uk

Entrance to the Show is FREE and all are welcome. The costs associated with staging the Show have increased again this year so please support the Recreation Club by visiting the bar, buy lots of FCHS raffle tickets, or dropping some cash in the Donation Buckets if you are able to, so that the Recreation Club and FCHS can hold a show in 2026 .



2025 SHOW TIMETABLE

<u>Friday 15th</u>	
6pm to 8pm	Staging of exhibits in hall
<u>Saturday 16th</u>	
8am to 10.50am	Staging of exhibits in hall
11am promptly	Hall closes for judging
11am	Free entry to outside events (see local press/ website/Facebook for more details)
11 am—2.30pm	Entertainment in the Arena
1.30 pm approximately	Hall open to view exhibits once judging has been completed (free entry)
2.30 pm	Fun Dog Show in the Arena
4pm	Presentation of Trophies and Certificates
4.30pm	Grand Raffle draw
4.40 to 5.30pm	Collection of prize money & exhibits from hall
5.00pm-10pm	Live music, Bar and Refreshments available





NOTES ON THIS YEAR'S SCHEDULE

This year the Anne Aitkin bowl will be presented to the first-time exhibitor with the most points in Section E, Floral Art. Each year it is a different section.

Please state on your entry if you are a first-time exhibitor in Section E and, if you receive the most points, you will be awarded the Anne Aitkin Bowl.

Children are reminded that they are welcome to enter any of the show classes not just those specifically for children. Additional boxes have been provided on the children's entry form where you can enter the class number of any additional classes you intend to enter. If there are insufficient boxes, then add additional class numbers on the back of the form. There is no charge for any Children's entries.

To all WI members: There is now an award for the WI member who achieves the most points across all adult classes. (Sponsored by Earls Colne WI)

Plus—look out for the **Gold Classes** in Sections B,C & E as they are sponsored and the winner will receive a prize! (more Details on Page 24)

In addition to this schedule, hints and tips on how to show exhibits are available on the FCHS website.

www.fourcolneshorticulturalsociety.com

or from the secretary (tel. 07941 131164).

email secretary.fchs@outlook.com





RULES AND REGULATIONS

1. Exhibitors must reside within 10 miles radius of Earls Colne. Children who have a relative within this radius may also enter.
2. Entry forms and fees must be returned to the Secretary, 110 Colchester Rd, White Colne, CO62PP OR the Show Secretary, Alex Eady, 21 Hobbs Way, Earls Colne (or those businesses listed on page 24) by **Wednesday 13th August**.
3. All exhibits are to be staged between **6.00 pm and 8.00 pm on Friday 15th August** or on the morning of the Show between **8.00 am and 10.50 am**. Exhibitors must leave the hall for judging to start **PROMPTLY at 11.00 am**.
4. **No one is to interfere or move other exhibits at any time. PLEASE ASK A STEWARD.** **ALL EXHIBITS** must be removed by exhibitors between 4.40pm and 5.30pm. The committee cannot be responsible for exhibits that are not collected.
5. All produce must be grown at the address shown on the entry form or at an allotment cultivated by the exhibitor. The gardens of exhibitors must be open for inspection by the Committee after the entry form has been submitted.
6. No prize will be given if the Judges deem an exhibit not deserving. The Judge's decision on all matters is final.
7. No exhibitor may show more than one entry in each class.
8. Any exhibit carrying garden pests, such as greenfly, etc, shall be removed from the hall and may be disqualified.
9. Vegetables must be clean and well presented. Further information from the Secretary, the RHS Horticultural Show Handbook (which is kept by the Secretary) or the 'Hints & Tips' section of the FCHS website. (www.fourcolneshorticulturalsociety.com).
10. Flowers for arrangements (Section E) need not be grown by the exhibitor.
11. Exhibits in Sections C (Art, Craft & Photography) and F (Children) must not have been exhibited in any previous FCHS annual show.
12. Exhibits in Section B (Home Economics) must be cold.
13. Handicraft entries should be clean and unused.
14. If the number of vegetables, flowers or other items varies from that stated in this schedule, or if the dimensions of an exhibit exceed the stated maximum, the entry may be disqualified at the judge's discretion.
15. Any person exhibiting an entry for the competition, which has not been grown or made by the exhibitor, will forfeit all prizes and be debarred from exhibiting in any future Show of the Society, with the exception as in Rule 10.
16. Exhibitors' names must not be visible on any entry, this is particularly relevant to classes 82, 83, 84, 171 and 172 (artwork).
17. All exhibits, personal property, etc. shall be at the risk of the exhibitors, and the Society shall not be liable for compensation for loss or damage from any cause whatsoever.





SPECIAL CLASSES AND DEFINITIONS

TOP VASE

A vase of mixed flowering stems that are to be viewed all round, containing a total of between 5 and 10 stems, taken from a minimum of two different kinds of plants. The vase can be any shape, size or material and there are to be no marks for the vase itself. This is a description only and all of the rules for this class (available from the Secretary) must be adhered to. The winner will receive a year's free membership of the Society. Top vase is not eligible for best exhibit in Section D.

TOP TRAY

A collection of 3 kinds of vegetables taken from the following list: carrots, cauliflowers, onions, parsnips, peas, potatoes, runner beans and tomatoes.

The vegetables are to be displayed within an area of 45cm x 60cm. This can be a black painted board, a black cloth or simply an area marked out on the staging. This is a description only and all of the rules for this class (available from the Chairman or Secretary) must be adhered to. The winner will receive a year's free membership of the Society. Top tray is not eligible for best exhibit in Section A.

WI Award

This award will be given to the WI member who achieves the most points across all adult classes (they must fulfil the residence rule)

SECTION A: CLASS 21 (HERBERT CURTIS CUP)

Vegetables to be displayed within an area of 75cm x 90cm and chosen from:

Artichokes (5)	Cauliflowers (2)	Marrows (2)	Potatoes (5)
Beetroots (3)	Celery (2)	Onions (2)	Runner Beans (6)
Cabbages (2)	Cucumbers (2)	Parsnips (3)	Tomatoes (5)
Carrots (3)	Leeks (3)	Peas (9)	Turnips (5)

SECTION A: CLASS 31

The 2 items (a flower and a vegetable or piece/s of fruit) will be judged both on individual quality and on how well they complement each other.

SECTION D: CLASS 109 AND 110

Class 109 - mixed herbaceous perennials are defined as plants that die back to the ground each year and grow again in subsequent years, and are not to include dahlias that have a separate class.

Class 110 - flowering shrubs, must be in flower, and is not to include roses and hydrangeas that have their own class.

SECTION E: CLASS 138

A novice is someone who has not won a 1st prize in Section E before.





2025 SECTION A - FRUIT & VEGETABLES

(Judge: Matthew Hill)

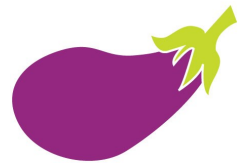


Class	No.
1. Potatoes, white	(5)
2. Potatoes, coloured	(5)
3. Potato collection, 3 varieties	(3 of each)
4. Beans, runner, over 30cm	(6 pods)
5. Beans, dwarf	(6 pods)
6. Beans, runner for domestic use	(6 pods)
7. Cucumbers, ridge, outdoor	(2)
8. Cucumbers, frame, indoor	(2)
9. Carrots, stump rooted, foliage trimmed to 7cm (approx.)	(3)
10. Carrots, long, foliage trimmed to 7cm (approx.)	(3)
11. Onion, tied down – up to 250 grams	(5)
12. Onion, tied down – over 250 grams	(5)
13. Beetroot, foliage trimmed to 7cm (approx.)	(3)
14. Marrows or Squash, for table use	(2)
15. Courgettes	(3)
16. Shallots, pickling, max diameter 30mm *	(9)
17. Leeks, foliage tipped, 2.5cm root (approx.)	(3)
18. Cherry tomatoes	(Truss)
19. Culinary Herbs, fresh, mixed and named collection in jar	(6)
20. Vegetable other than in classes 1 to 19 above	
21. Collection, vegetables ** (see page 8)	(6 kinds)
22. Saladings on a dinner plate	(4 kinds)
23. Tomatoes, indoor	(5)
24. Tomatoes, outdoor	(5)
25. Apples, dessert	(5)
26. Apples, cooking	(5)
27. Fruit a collection of 3 kinds, 1 dish of each	NEW
28. Fruit, any other	
29. Peppers/Chillis (capsicum), any colour	(3)
30. Top Tray (see page 8)	
31. Two part collection (see page 8)	

* To pass freely through a 30mm ring.

** To be displayed within an area of 75cm x 90cm.





SECTION G – HEAVIEST AND LONGEST

(Judge:Matthew Hill)

Class

- | | |
|------|------------------------------|
| 180. | Heaviest marrow |
| 181. | Heaviest potato |
| 182. | Heaviest onion, no top |
| 183. | Longest runner bean |
| 184. | Longest stem of rhubarb |
| 185. | Longest carrot |
| 186. | Any freak fruit or vegetable |





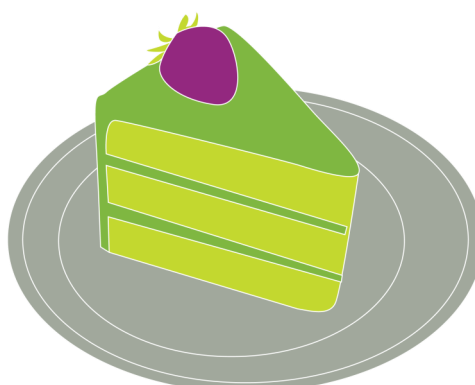
2025 SECTION B - HOME ECONOMICS

COOKERY

(Judge: Barbara Marcoolyn)

Entrants are free to choose their own recipes, but must not exceed the maximum size stated. Cookery entries must be cold and covered with an untinted plastic bag (not cling film). The entrant can provide a clear dome to cover entries to class 47 and 51 and 45 if appropriate.

Class	No. or Max. Size
41. A quiche in a homemade pastry case	Individual or slice suitable for one portion
42. Fruit Scones	(5)
43. Cheese Straws	(5)
44. Bread 500g bloomer (any flour)	
45. My favourite recipe incorporating citrus fruit	
46. Sausage rolls made with homemade pastry	(3)
47. A decorated carrot cake minimum 2 layers. Note proportion of marks for cake 80% & decoration 20%	20cm dia.
48. Viennese sandwich biscuit with jam & buttercream filling	(3)
49. Chocolate truffles	(5)
50. Swiss roll with jam filling	Length 23cm
51. Coffee and walnut Cake. MEN ONLY	20cm dia.





Preserves

(Judge: James Waters, Wilkin & Sons Ltd.)

Classes 55 - 63 Must be home made, labelled and presented in a jar exceeding 250gms. Jams and jellies can be topped with a waxed paper disc and closed with cellophane OR have a metal twist top. Curd must have wax disc & cellophane closure. Pickles must be closed with a twist top lid. Neither jar nor lid should show any commercial markings e.g., Bonne Maman, Chivers etc. Kilner or other proprietary preserve jar/lid maker is acceptable although must be screw top design. All preserves to be dated and made no more than 12 months from the date of the show. The judge should be the first person to open the preserve since making

Class

- 55. Jam, strawberry
- 56. Jam, any other non-stone soft fruit
- 57. Jam, plum (can include damson, bullace, greengage)
- 58. Jam, any other stoned fruit
- 59. Jelly, any fruit
- 60. Marmalade, any fruit
- 61. Curd, any fruit
- 62. Tomato ketchup min 100ml bottle or jar as described above.
- 63. Fruit based chutney
- 64. Homemade flavoured spirit e.g. sloe gin (Label to describe contents. Minimum 100ml bottle)



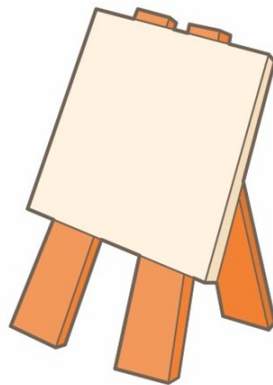


Children's Colouring Competition (see over)
please detach this page carefully and colour in
See Class 151 page 22

Entrant's (child's) name and contact details:

Name

Contact Number.....



This years colouring competition (class 151) has been kindly provided by Aisha Jackson of Aisha Jackson Designs www.aishajacksondesigns.com as there were no entries in 2024 to class 172.

If you need more than one copy please photocopy or download from the Four Colnes Horticultural Society website.

www.fourcolneshorticulturalsociety.com



FOUR COLNES HORTICULTURAL SOCIETY







Percival
& COMPANY



ESTABLISHED IN 1951, WE ARE AN
INDEPENDENT FAMILY RUN FIRM OF
PROPERTY PROFESSIONALS,
SPECIALISING IN PROPERTY SALES,
LETTINGS AND MANAGEMENT.

Looking to Sell or Rent?
Contact us now for a
FREE Market Appraisal

WWW.PERCIVALANDCOMPANY.CO.UK
EARLS COLNE@PERCIVALANDCOMPANY.CO.UK
HIGH STREET, EARLS COLNE
01787 223879





2025 SECTION C - ART, CRAFT & PHOTOGRAPHY

CRAFT

(Judge: Sheils Gunton)

Class	No. or Max. Size
70. A handmade Birthday card	Max A5
71. An item made from recycled materials	60cmx 60cm
72. A draft excluder, any medium	* see note below
73. An item can be a pair e.g. earrings or cufflinks) of jewellery – any medium	
74. A hand knitted article, any ply	* see note below
75. Crochet, tatting, lacemaking, any article	* see note below
76. Needlework, machine and/or handmade, any article	* see note below
77. Canvas work, tapestry, cross stitch, counted thread only	* see note below
78. Any patchwork article, machine and / or hand made	* see note below
79. A wooden article	* see note below
80. A set of craft items, any material	* see note below
81. Any other craft not covered by the other classes	* see note below

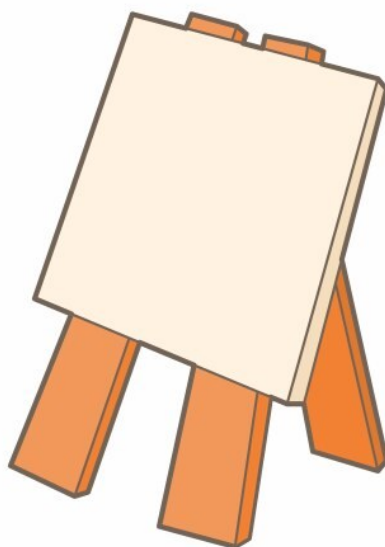
* If your exhibit is bigger than 60cm in any direction please indicate the space required on the entry form to assist in the preparation of the show layout.





ART
(Judge: Nicci Baslington)

Class		Maximum size
82.	Art, painting, using oil or acrylic paint	60cm x 60cm
83	Art Painting/drawing, using medium other than 82 above or including mixed medium	60cm x 60cm
84	A Landscape, painting/drawing, any medium	60cm x 60cm
85.	Miniature art	10cm x 10cm





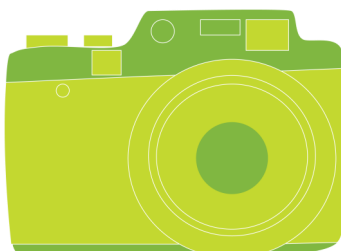
PHOTOGRAPHY

(Judge: Tom Lewington)

Photographs may be mounted on card but must not be framed.

Maximum size of prints 13cm x 18cm. Photographs may be film or digital but the digital pictures must not be enhanced (with the exception of class 96).

Class	Subject	Number
90.	A B C	Set of 3 photographs
91.	The Doors	Set of 2 photographs
92.	Guys & Dolls	Set of 2 photographs
93.	Simply Red	1 photograph
94.	The Animals	1 photograph
95.	Shadows	1 photograph
96.	Altered Images-Digitally enhanced picture,	1 photograph
97.	People and places at a Four Colnes Horti-cultural Society event	1 photograph, state where it was taken and the year





2025 SECTION D – FLOWERS

(Judge: William Charity, Markshall Estate)

The exhibitor must have grown all entries in this section.

Class	No. or Max. Size
100. Hydrangea	1 stem
101. Best pot plant, any kind (except those in own class)	20cm pot
102. Orchid	15cm pots
103. Specimen foliage plant in a pot	20cm pot
104. Cactus or Succulent in a pot	20cm pot
105. Gladioli, any colours	3 stems
106. Roses, any variety, any colours	3 stems
107. Specimen rose	
108. Bowl of floating flowers	30cm any dimension
109. Mixed herbaceous perennials (see notes page 8)	3 stems
110. Flowering shrubs, not covered by other class (1 kind) (ditto)	3 stems
111. Mixed <u>annuals</u> (grown from seed in the last 12 months)	10 stems maximum
112. Dahlias, pompon	5 blooms
113. Dahlias, cactus or semi-cactus	3 blooms
114. Dahlias, decorative or ball, any size	3 blooms
115. Dahlias, any other type not covered by classes 112 - 114	3 blooms of the same variety
116. Fuchsias, staged in a container	5 blooms
117. Top Vase (see page 8)	5 - 10 stems





2025 SECTION E - FLORAL ART

(Judge: Joan Gibson)

Any height unless stated otherwise. Maximum sizes must be adhered to. Material must be fresh unless stated otherwise. Accessories should not dominate the design. Designs NOT using Floral Foam are encouraged and this will be taken into account when deciding on the exhibit's merits.

Anne Aitken Bowl. Please state on the entry form if you are a first time exhibitor in this section to be considered for the Anne Aitken Bowl.

Class	No. or Max. Size
130. A buttonhole	
131. Miniature arrangement	10cm x 10cm x 10cm
132. A petite arrangement	23cm x 23cm x 23cm
133. Sunrise	60cm wide
134. Ladies Day	60cm wide
135. Red, Red Wine	40cm wide
136. A flowerless arrangement	60cm wide
137. Three of a kind	40cm wide
138. An arrangement by a novice	40cm wide





2025 SECTION F - CHILDREN'S ENTRIES

(Judge: Gill Carter)

Exhibits in Section F must be the child's own work and must not have been exhibited in any previous FCHS annual show. Where a maximum size is stated it cannot be exceeded. If the maximum size is exceeded the entry will not be judged. Where no maximum size is stated but your exhibit will be greater than 45cm in any direction please indicate the size on the entry form so sufficient space can be allocated.

UNDER 8 YEARS - birth dates after 31.7.2017

Class

- | | | |
|------|--|----------------------|
| 150. | Any craft for children under 5 years of age, (birth dates after 31.7.2020) | |
| 151. | Colouring, drawing provided (pages 14 &15) | Any medium |
| 152. | Handwriting, (not decorated) | See text (overleaf) |
| 153. | A model, any material | Max size 30cm x 30cm |
| 154. | Decorated biscuits | (3) |
| 155. | Something I've grown myself | |
| 156 | Handcraft, any article | Handmade |
| 157 | A flower arrangement in a jam jar | |

8 TO 12 YEARS - birth dates 1.8.2013 to 31.7.2017

Class

- | | | |
|------|---|----------------------|
| 160. | Handwriting, (not decorated). | See overleaf |
| 161. | Something I made at school | |
| 162. | A photograph entitled "My Favourite Place" | Max size 13cm x 18cm |
| 163. | 'The seaside' in a seed tray (no real water please!) | |
| 164. | A Lego model – your own design | Max size 30cm x 30cm |
| 165. | A homegrown fruit or vegetable | |
| 166. | Handicraft, any article | Handmade |
| 167. | Homemade and decorated biscuits | (3) |
| 168. | A flower arrangement in a jam jar inspired by your favourite colour | |





Class

- 170. Something useful that I have made myself
- 171. Design a poster for the 2026 Show (can be digital) See instructions below
- 172. Draw a picture for Class 151 in 2026 See instructions below
- 173. A tray with 4 different fruit or vegetables that I have grown myself.
- 174. Homemade and decorated biscuits (5)
- 175. Any other craft
- 176. A model, any material
- 177 A flower arrangement

SECTION F - HANDWRITING

Class 152 - under 8 years

My Flower

I had a little seed and I put it in a pot.

I put it in the sunshine and I watered it a lot.

I waited and I waited. I watched it grow and grow.

And then one day a flower came out to say hello.

By Margaret Schroder

Class 160 - 8 to 12 years

Write a maximum of 100 words starting with 'It was a warm sunny day at the Four Colnes Show when...'

Entries will mainly be judged on the handwriting, but the judge will be interested in what you write too.

SECTION F notes

Class 171

Poster to be A4 paper drawn in black or dark blue, landscape or portrait orientated and outline only. Do not sign your entry; it will be credited to you in the printed version and in the 2026 Schedule.

Class 172

To be on plain white A4 paper drawn in black or dark blue, landscape or portrait orientated and in outline only. When used for next years class 151 the size will be reduced to A5. Do not sign the drawing; it will be credited to you in the 2026 Schedule.



FOUR COLNES

HORTICULTURAL SOCIETY

PRESIDENT: Oliver Wass

PRIZE MONEY			
	1 ST PRIZE	2 ND PRIZE	3 RD PRIZE
All Childrens Classes	£3	£2	£1
No cash prizes for adult class places except where prizes are Sponsored as follows:			
Olivers Plants & Kings seeds: All entrants to Sections A vegetables, D Flowers and G Heaviest & Longest receive £10 Kings Seed voucher redeemable at Olivers Plants			
Black Horse Café: Winner of Class 47 A decorated Carrot Cake receives an Afternoon Tea Voucher			
Wilkin & Sons: Prize for Best Exhibit in Section B preserves			
Ziel Designs: A £15 voucher for the winning entry in Class 81			
Stane Street Players: 2 seats at their next show for the winner of Class 134 Ladies Day			
NB Only a first place will be awarded in Section G classes			
<p>Banksian Medal awarded by The Royal Horticultural Society (Excludes people who have won it for either of the last two years) to the exhibitor with the greatest number of points in section A, B & G Points are awarded as follows to establish which exhibitor has won the various cups and medals:- 1st Place =3 points 2nd Place= 2 points 3rd Place=1 point Highly Commended = 0 points In the event of a tie then the person with the most 1st places will be the winner. Should that still be a tie then the one with most 2nds. If there is still a tie then the award would be shared.</p>			

EXHIBITORS' FEES
FCH Society Members and Children – Free
Non-members – 50p per class for first 10 entries. Free thereafter.
Note that Membership of the FCHS is only £5 per year. To join, contact membership.fchs@outlook.com

SCHEDULES ARE AVAILABLE FROM, and Entry Forms can be returned (by 13th August) to:
Show Secretary: Alex Eady, 21 Hobbs Way, Earls Colne CO6 2FE (tel. 07735 332859) Email: alexjameseady@yahoo.co.uk
Secretary: Sarah Adlem, 110 Colchester Road, White Colne, (Tel: 07941 131164) email: secretary.fchs@outlook.com
Earls Colne Library, Ziel, Earls Colne Recreation Club, Olivers Plants, Ecolnes Refillery, Percival & Co.



PRIZE & CUP WINNERS 2024

C Holmes Cup Best Exhibit in Section A	W G Crane Challenge Cup Most Points in Section A	Herbert Curtis Cup Best Collection in Section A, Class 22	Colne Dairy Bowl Most Points in Section B - Cookery	Tony Willsher Cup Best Exhibit in Section B Cookery
<i>Richard Curtis</i>	<i>Christopher Dale</i>	<i>Richard Curtis</i>	<i>Sarah Adlem</i>	<i>Clara Foster</i>
Dale Award Most Points in Sections B - preserves	Wilkin & Sons Ltd Award Best Preserve	Challenge Cup: Craft Best Exhibit in Section C	Young Farmers' Cup Most Points in Sections C	Glass Bowl: Best Photo- graphic Exhibit
<i>Teresa Mortimer</i>	<i>Teresa Mortimer</i>	<i>Nicci Baslington</i>	<i>Frances Barton</i>	<i>Isabel Hume</i>
Challenge Cup Best Exhibit in Section D	V P A Cup Most Points in Section D	Challenge Cup Best Exhibit in Section E	A E Evans Challenge Cup Most Points in Section E	Peter Fill Cup FCH Society Member Most Points overall
<i>Fleur Radford</i>	<i>Fleur Radford</i>	<i>Donna Goodchild</i>	<i>Donna Goodchild</i>	<i>Christopher Dale</i>
Top Vase Section D, class 118	Top Tray Section A Class 30	Award Most Points for Children under 8 years	Award Most Points for Children 8-12 years	Award Most Points for Children 12-16 years
<i>Caron Dyer</i>	<i>Richard Curtis</i>	<i>Marlowe Tonkin</i>	<i>Imogen Kane</i>	<i>Saul Laurie</i>
Anne Aitkin Bowl Most points for a first time exhibi- tor in Section D	Banksian Medal Awarded by The Royal Horticultural Society to the Exhibitor winning the most points in sections A, D & G			The WI Vase- Most Points in Section A,B,C,D,E & G by a Wom- ens Institute member
<i>Janet Hull</i>	<i>Chris Dale 2023 & Ian Allman 2024</i> 			<i>Sarah Adlem, Earls Colne WI</i>

THANK YOU FOR SHOPPING LOCALLY

Inspiring gifts
&
stylish
homewares

ON YOUR HIGH STREET

Tuesday- Saturday
10 am - 5 pm

*Appointments are advised to view our
fabric library*

The Old Forge, High St, Earls Colne



Ziel_design



Ziel Earls Colne



01787 222 989

Ziel Design
FOR LIVING
25 years of beautiful homes



NORTH ESSEX'S FIRST CHOICE OF SKIP HIRE COMPANY

COLNE SKIPS



2, 3, 4, 6,
8, 12 & 16
Yard Skips
20 & 40
yard
RORO
Containers
Prompt
Delivery &
Collection



NEXT DAY
DELIVERY



WE RECYCLE 95%
OF OUR WASTE

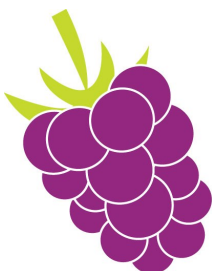


RELIABLE
SERVICE



NEAREST BRANCH
CARRIERS & TRANSFER
STATION

Tel: 01787 222 950



STANE STREET PLAYERS
PRESENTS...

DAY OF RECKONING

A COMEDY DRAMA BY
PAM VALENTINE

**FRIDAY 26TH & SATURDAY 27TH
SEPTEMBER 2025
EARLS COLNE
VILLAGE HALL
ALL TICKETS £13**

This amateur production of Day of Reckoning is
presented by arrangement with Concord
Theatricals Ltd. on behalf of Samuel French Ltd.
www.concordtheatricals.co.uk

FOUR COLNES HORTICULTURAL SOCIETY

Entry Form

This form must be completed by the Exhibitor and returned **NO LATER THAN
WEDNESDAY 13th AUGUST 2025** to addresses as listed on page 24

No changes will be allowed on the day. All entries to be staged by 10.50 am

Draw a circle around the number of each class in which you wish to exhibit.

Section A. Fruit & Vegetables

1 2 3 4 5 6 7 8 9 10 11 12 13 14 15 16 17
18 19 20 21 22 23 24 25 26 27 28 29 30 31

Total Exhibits for Section A.

Section B. Home Economics

41 42 43 44 45 46 47 48 49 50 51
55 56 57 58 59 60 61 62 63 64

Total Exhibits for Section B.

Section C. Art, Craft & Photography

70 71 72 73 74 75 76 77 78 79 80 81 82 83 84 85
90 91 92 93 94 95 96 97

Total Exhibits for Section C.

Please indicate here the space required for your exhibit in Class 80 or 81 if larger than 60 cm in any direction.

Section D. Flowers

100 101 102 103 104 105 106 107 108 109 110 111 112 113 114 115
116 117

Total exhibits for Section D.

Section E. Floral Art

130 131 132 133 134 135 136 137 138

Total exhibits for Section E.

I'm a first-time exhibitor in this section Y/N

FOUR COLNES

HORTICULTURAL SOCIETY

Section G. Heaviest & Longest

180 181 182 183 184 185 186

Total exhibits for Section G.

I am a WI member belonging to. WI and would like to be considered for the 'Most Points by a WI Member' award.

Please complete and delete where necessary

Either:

I am a member of the Society (Entries are free)

Total entries.

Or

I am not a member of the Society

Total entries. @50p = £ : p total enclosed (max fee £5)

I hereby enter my products at my own risk and declare that, where applicable, they have been grown on land occupied by me.

I agree to stage my exhibits in accordance with Rule 3

*I agree **not** to remove my exhibits before completion of the prizegiving*

(usually about 4.40pm) as per Rule 4

GDPR statement: The FCHS holds your personal data in written and computerised format solely to manage the show and contact you if there are any queries with your entry. By submitting your entry to us you are consenting to this use.

Exhibitor*

*Please give first name IN FULL and surname to assist in sorting entries

Address.....

.....

Telephone number.....

Email.....

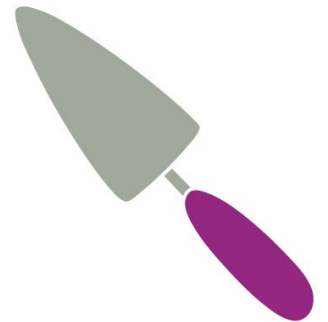


Aisha Jackson Designs

www.aishajacksondesigns.com

aishajacksondesigns@outlook.com

Tel: 07443644529



HERITAGE

SALES
LETTINGS
LAND & NEW HOMES
MORTGAGES

Earls Colne

54 High Street
Earls Colne
CO6 2PB
01787 722000



Coggeshall

3b Church Street
Coggeshall
CO6 1TU
01376 566890

www.essexheritage.co.uk

FOUR COLNES

HORTICULTURAL SOCIETY

Children's Entry Form

To be returned **NO LATER THAN WEDNESDAY 13th AUGUST 2025**

to addresses as listed on page 24

No changes will be allowed on Show day. All entries to be staged by 10.50am

Please circle the number of each class you wish to enter

UNDER 8 YEARS (Birth dates after 31.7.2017)

Other classes being entered:

150 151 152 153 154 155 156 157

Exhibitor*.....Total No of entries.

Date of birth.....Telephone No.....

Address.....

Email.....

Please indicate here the Class No and space required for any entry over 45cm

8-12 YEARS (Birth dates 1.8.2013 to 31.7.2017)

Other classes being entered

160 161 162 163 164 165 166 167 168

Exhibitor*.....Total No of entries.

Date of birth.....Telephone No.....

Address.....

Email.....

Please indicate here the Class No and space required for any entry over 45cm

12-16 YEARS (Birth dates 1.8.2009 to 31.7.2013)

Other classes being entered

170 171 172 173 174 175 176 177

Exhibitor*.....Total No of entries.

Date of birth.....Telephone No.....

Address.....

Email.....

Please indicate here the Class No and space required for any entry over 45cm

****Please give your first name IN FULL and surname to assist in sorting entries***

I agree to stage my exhibits in accordance with Rule 3 ☐

I agree not to remove my exhibits before 4.40pm as per Rule 4 ☐

GDPR statement – see adult entry form (page 28) for full wording

Black Horse Café



Home-Grown & Locally Produced Ingredients

Breakfast – Lunch – Afternoon Tea – Fresh Coffee & Homemade Cake

Open 9:00am – 4:00pm daily

Last food orders 3pm

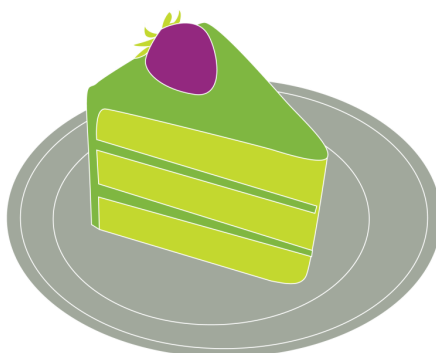
To Book:

Telephone: 01787 220281

Email: blackhorsecafe@oliversplants.co.uk

Broomfield Farm, Coggeshall Rd, Earls Colne, Colchester, CO6 2JX

www.oliversplants.co.uk/black-horse-cafe





Why Should You Join Us?

✓ You Could Save Yourself Over £100 a Year in Day-Membership Fees

✓ Online Booking

✓ We Are YOUR Charity

✓ Cheaper Drinks

✓ Single - £50
Family - £70
Over 60 - £40
Over 60 Family £60

Get In
Touch Now!



Visit Our Website



www.ecrc.club